

D15-1969

PURDUE LOG

PURDUE UNIVERSITY DEPARTMENT OF FORESTRY AND CONSERVATION 1969 PURDUE LOG

STAFF

Editor-In-Chief	Jack H. Loyd
Senior Assistant	Alan R. Hutson
Junior Assistant	Harold Bruner
Business Manager	Brian McClelland
Advertising Manager	Charles N. Ratts
Photography Editor	Scott J. Starkey
Faculty Sponsor	Dr. William C. Bramble

COVER

The cover of the 1969 Purdue LOG was designed to include the many symbols of the forester - at Purdue and elsewhere. Pick out anyone of them and think about it. The caulked boots and hickory shirt - the western logger's everyday attire. The hardhat - a woodman's safety device. Smokey the Bear - the well-known national forest fire-prevention symbol. The Forestry Handbook - an aid to all foresters. The double bitted axe - who else uses it? The Purdue Cruising Prism - an instrument of great aid to the forester created by our own department. The Computer Program and Data Cards - a modern forest management technique. The Purdue LOG and Forestry Sweatshirt-at least everyone at Purdue knows what they symbolize-a great forestry department.

Scott J. Starkey

Editor's Note

On a few occasions the LOG has had a central driving purpose behind it. This year the Purdue Foresters were triumphant in the Regional Conclave and since then the Forestry Club has boomed with activities and fellowship. It is my hope that the 1969 LOG has captured some of this year's spirit for our future nostalgia. I wish to thank all those who contributed and especially my wife, Rita, who bore with me through my struggles with my first journalistic encounter.

TABLE OF CONTENTS

ARTICLES	Page 3
FACULTY	Page 19
SENIORS	Page 31
UNDERGRADUATES	Page 35
ADVERTISING	Page 39

Summer Campers' Prayer

Now I lay me down to sleep,
My life may our Director keep.
May this place wherein I dwell
Wind-storm, rain, and bugs repell.
Let no classmate misdirected
Fell a tree where least expected,
May the cooks in making stew
Put in beef that I can chew.
Make my legs strong and limber
For plodding through swamp and timber.
Blank my mind of game preserves
Pellet counts and volume curves
The sampling block and total heights
Tally sheets and cruiser's plights.
And when I leave this rough abode
And drive the fearsome forest road
Let my car withstand the jolts
And not lose all its nuts and bolts
Nor waver to the treacherous side
And end up in the flowing tide,
And till dawn replaces night
Make me void of thoughts of flight,
And thanks to him who directs us all,
And guides us through the days worst pall,

C. I. Miller



The Champs

MIDWEST FORESTER' CONCLAVE

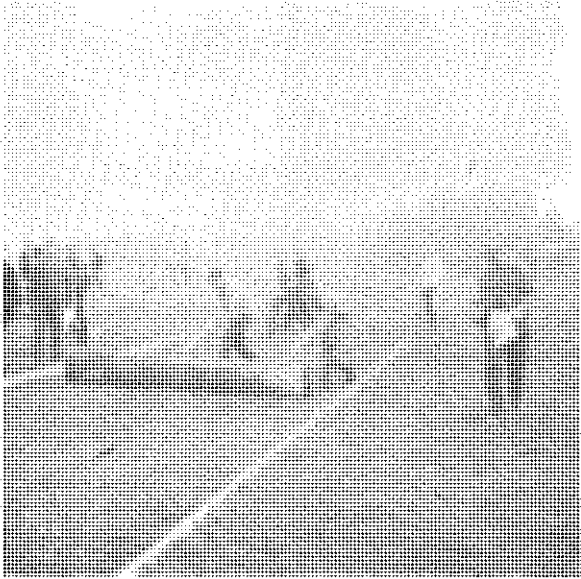
The Illini Foresters selected Allerton Park, located just a few miles from the University of Illinois, to be the site of the 1968 conclave. Being somewhat close was a big help for Purdue's attendance. Most of us left that morning around 4:30 a. m. from the Hort Building. It was a struggle just getting there: fog-LaFara's Chev had a flat-more fog-another flat for LaFara-denser fog-road closed. I swear every car came by a different route, but nonetheless the Boilermakers showed up. It was a fine place for a conclave and finally the sun, welcomed by all, raised the temperature into the 70's.

At 7:45 the conclave started and first was the traverse and dendrology events. Jack Loyd placed 4th in traverse giving Purdue its first point on the score board while the Illini placed 1st, 2nd, and 3rd in dendro for 10 points. By 8:30 the chewers lined up, everyone tried hard but Purdue "fell short" of placing. By 9 o'clock Purdue was "fired up" and started rolling the log.

Larry Jones and James Barnhart had a first place rapped up before the spectators focused their cameras. Our other two teams were so fast that the log jumped the out-of-bounds board.

The chain throw started, and the Juniors, still tuned-up from summer camp, really shined. David Hanson placed 2nd and Mike Coggeshall 3rd. This really put the Purduvians back into things with 5 more points as we began the one-man bucking competition. Michigan's three entries huffed and puffed for the first three places, leaving Southern Illinois with a hard-earned fourth. Purdue held a 1 point lead on the scoreboard and had that taste of victory on their tongues. We had practiced hard since the fall Field day for all of the afternoon events.

The bolt-throw came first after lunch. The 'stick' was thrown and retrieved many times with Purdue's Jack Loyd finishing 2nd (missing first by a mere 6 inches). At 2 o'clock the chopping event began and it was the only event in which four different schools placed. At the same time Purdue's Rich Hahn was "doing his thing" at the match splitting block. He lowered the axe for a first while LaFara finished 4th only to have another flat on the way home. By 3:00 all 8 schools were polishing their crosscuts preparing to cut the 14 inch red oak cant. All teams were in top physical shape, and most of them pulled the saw like well-oiled machines. When the kerf stopped flying, the Michigan teams had won the top three honors again, with Minnesota struggling for fourth.



Barnhart and Jones snatch a big first



Mike Coggeshall throws the chain

Loyd heaves the bolt for 2nd place



Starkey-Frog runs the boom





Koontz-Frog walks on water to clinch the championship



Rich Hahn does his thing for five big points

We had just watched Michigan take 10 points and go into the lead by sweeping the sawing events. This left 5 of the 8 schools still battling it out for the first place.

Then what looked like one of the easiest events turned out to be one of the most brutal. Many contestants tried until they were bruised and completely exhausted. It was the boom-run, consisting of floating hardwood logs connected end-to-end with small pieces of rope. The water was cold and about waist deep with a mud bottom. After much splashing from the contestants, Scott Starkey for Purdue, with only a couple of splashes, finished in 39.8 seconds. By far the best time of the day. More splashing and bruises followed and then (after being assured of a few cases of PBR if he didn't fall) came yours truly, Grace running those logs in 14.6 seconds with not even a splash, well at least not until the gang threw him in. He got a 1st and Scott a 4th.

Phew!!, it was all over: Purdue 26pts, Mich. 25, Ill. 19, Missouri 6, S. Ill. 14, Mich Tech, 13, and Mich. State with 3 pts. and a bearskin rug for their efforts.

With NO ice cream social planned, we received our awards and headed home with the traveling trophy and plan to keep it for awhile. If any of you readers are interested, come to Michigan Tech next year and cheer the best foresters in the nation to victory.

Greg Koontz

SUMMER CAMP 1968

or

HOW LONG CAN YOU TREAD WATER?

The road was long, narrow, and dusty, but we had made it, even though the Pabst Brewery required a two hour delay --but what a delay! As we pulled onto the camp road, our emotions were mixed, to say the least, but once we caught sight of the buildings, our emotions were one. We chimed in unison, "Are you kidding me!?! Which way is Indiana?!"

Our fears were enhanced by C. I. Miller's first communication tous after arrival. He said, "Since you're here early, the less you work the less you eat!" He wasn't kidding. We were glad the Tipler emporium was within driving distance.

Our next major concern was, with the weather as nice as it was, how could we maintain an interest in academics, rather than devoting all day to fishing, swimming, bird watching and pellet counting. We soon found the answer when the monsoon season arrived in northern Wisconsin. By the end of June, eight and a half inches of rain had transformed a hardy, outdoor crew into sniffing, indoor, fire tenders. Harold "Wierd" Bruner was voted #1 fire tender, and Johnny "De Dryer" Dwyer took honors in boot burning!

Meanwhile the Lost Lake Flotilla (Toole, Sanders, Nate, and Skinny) were terrorizing the denizens of the deepest reaches of the lake with bare fist, frog gig, and Old Pal pocket knives. All of this took place in direct opposition to your old, friendly smiling, local Wisconsin conservation officer. Who was otherwise known as "Take-your-Granny-to-court".

We received invaluable instruction in Forest Biometrics from our illustrious professors --John Moser, with a wit of the year; C. I. Miller and his word for the day; and T. W. Beers, whose diameter head high was 7.1 inches which equalled



1968 Lost Lake Forestry Camp

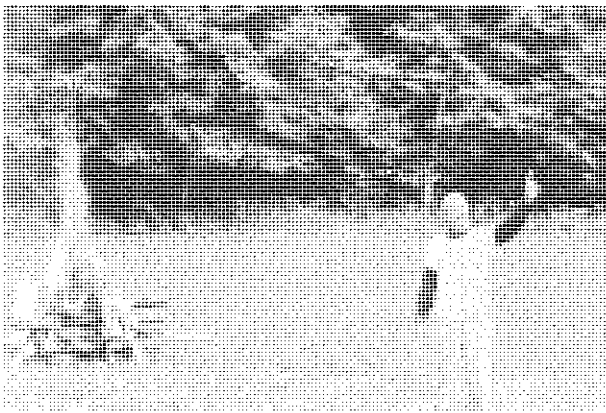
GROUND ROW (L TO R) Ted Beers, Trinket, Tom Beers, Tim Beers, Todd Beers. 1ST ROW (L TO R) Ronnie Linville, Mrs. R. Linville, Dick Haskett, Mrs. R. Haskett, Mrs. T. W. Beers, Prof. T. W. Beers, Tom Bricker, Prof. "Charlie" Miller, Mrs. C. I. Miller, Mrs. T. Schultz, Tim Schultz, Mrs. J. Linderman, John Linderman, 2ND ROW (L TO R) William D. Sanders, Gerald Rausch, James Barnhart, Nathan McKenzie, J. D. Fox, Patrick M. Toole, Don Stump, Michael Bourke, Gregg Clymer, James Carter, David Hanson, James Beck, Tom Quilty, Tom Martin. 3RD ROW (L TO R) Charles Coffman, Dan Gosnell, David Linn, Michael Coggeshall, Terry Alderfer, Joe Schuerman, John Dwyer, David Jenkins, Philip Pickett, Martin L. Snyder, Ronald Kummer, Harold Bruner, Larry Jones, Demmis Hammer, Tony Roe.



Dwyer has a sudden flare for greenery.



"Don't pull the plug, that's tomorrow's soup.



7.1 inches which equalled \bar{x} for the camp. Next we were given instruction in the traditional headache of all forty students--Forest Ecology taught by our inspirational guide "Doc" Bramble who took time out from fishing to cultivate our fertile minds. But he was taught a thing or two by Dave "I Lost the Road" Hanson otherwise known as the bass scourge. We will be indebted forever to Dr. Kirkpatrick for sharing with us the key to identifying the Crested Fly Catcher by his ubiquitous call, "Chee-Beck, Chee-Beck, Chee-Chee-Beck!" The value of empirical field technique was hammered home by our quadruped defecation count that was for the birds. The statistics of the operation failed us and was brought to our attention by Leroy, a knowledgeable and colorful wildlife biologist with the Wisconsin Department of Natural Resources.

Doug Knudson led us into the recreation field for an introduction into one of the fastest-growing aspects of a forester's responsibility, and he lost us!

The butchering of a red pine stand was led by visiting Walter "Wally" Beineke filling in capably for absent Clair Merritt.

"Digging-to-China" otherwise known as exposing a vertical soil profile was watched by the man with a dirty thumb, Doctor Byrnes.

The industrial trips were chaperoned by Carl Eckleman who game the "Big Yellow School Bus" an escort through the wilds of northern Wisconsin and the U. P. of Michigan.

Hamms Brewery and the camp "cooks(?)" were responsible for sustaining us throughout the summer. Three cheers for Hamms! A half a cheer for T. Bricker, and the "Flying Fickle Finger of Fate Award" to the Schultzs.

So much for fine-fuel moisture, now for the relative humidity



The COUP DE GRAS as Michigan loses the final event.

The "tip board" tells the final tale.



Usual utensil fare on the nights we were subjected to roast (?) was a pneumatic jack-hammer borrowed from the pipeline company in Iron River.

The honor of Purdue was upheld this summer by our resounding victory, 65 1/2 to 33 1/2, over visiting Michigan, who proved to be one hell-of-a-bunch of ice cream socialists, but not quite the caliber of the Boilermakers.

In retrospect, the summer was an invaluable experience that will not easily be forgotten by those of us who were there. We owe Charlie Miller, Mrs. Miller, and Dick and Vickie Haskett a thank you that mere words cannot express. The spirit and enthusiasm of the professors and their families demonstrated to us the fact that it takes a special breed of person to devote his life to the forestry profession. Their example will serve as our Polaris in the dark forest of the future!

Submitted respectfully by
John Dwyer and J. D. Fox

THE PURDUE FORESTRY CLUB

What is the Purdue Forestry Club? Well, it is a gathering of Foresters. Lets call it a "Fraternity of Foresters". This leaves me with little more to say, for everyone can guess what comes next. When the Purdue Foresters get together good times are bound to happen.

It has been more or less tradition for the Forestry Club to meet every other Wednesday throughout the school year. The meetings consist of about 20 minutes of a rather informal parliamentary procedure and discussion, followed by a 40 minute program. The programs are geared to cover matters of interest to the foresters that we don't obtain in the classroom. They may include everything from slides of summer jobs to talks presented by the "father of modern CFI", Cal Stott. Following the meeting there is coffee and doughnuts for all and often a journey to the "Pig" for the elder members of the clan.

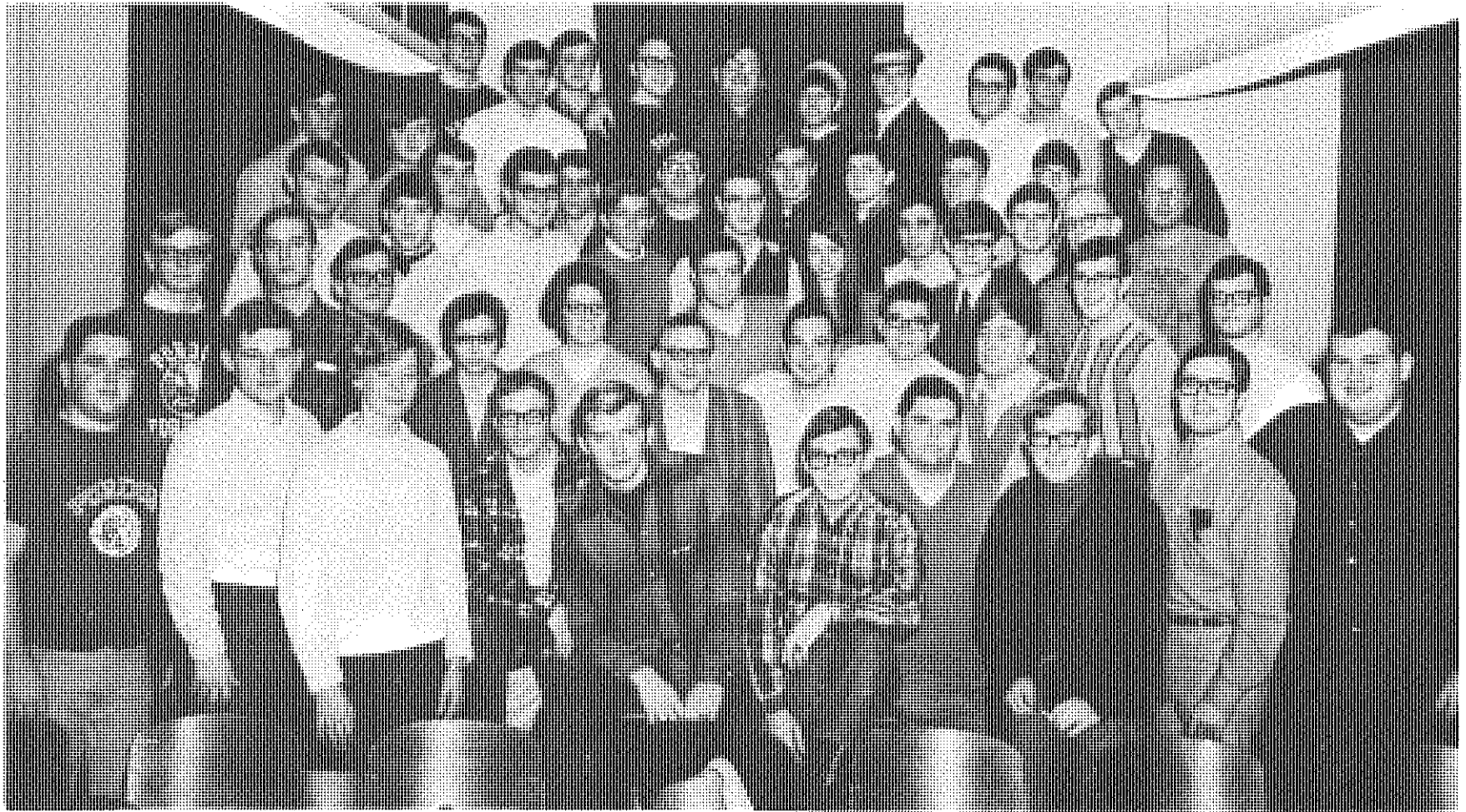
The activities of the Forestry Club include a Spring and Fall field day and then the Midwestern Forestry Conclave. The Foresters are also in charge of the Annual Forestry and Conservation Banquet.

The Forestry Club has several money-making projects to keep us in chain-saws, axes, conclave equipment, ice cream, and in general out of the red. In the winter we cut and sell firewood. We sometimes take on special projects such as campground improvement for the City Park Department and cleaning up the experimental forests. This year we have a proposed Rifle Raffle to collect the coin.

To me, the wonderful thing about the Forestry Club and the goal of it -- is simply to provide a good means of getting the foresters together outside of the classroom. It gives the upperclassmen and underclassmen a chance to meet and become friends. It gives us a chance to become active in an organization with others of the same interests. It builds leadership and promotes cooperation -- qualities which the forester needs.

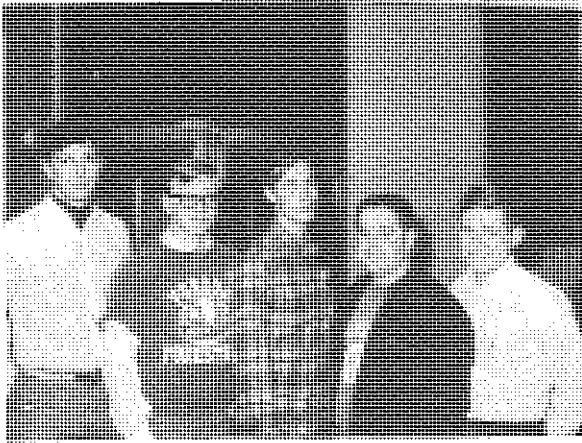
As one might expect, these meetings get the Purdue Foresters together and the wheels rolling, but this year they want more than just meetings --- they want Forestry Club Ice Cream Socials, at least once a month! These affairs have become quite popular, if you doubt this fact, just show up out at Stoney's farmhouse when the thing is happening! Let me give you a warning: you might have to park behind 30 cars; wait in line to fill your mug with ice cream; nudge your way through a singing, dancing crowd of Foresters and their women and - maybe not make it home until the rooster crows or the last standing Forester yells "TIMBER".....

Scott Starkey (Pres.)



Forestry Club

Row 1-Wilhelm, Bruner, Deatline, Jenkins, Stump, Kummer, Finkbiner, Baldwin, Shonk, Hittle, Row 2-Starkey, McClelland, Martin, --, --, Hirstein, Wesson, Kirkman, --, Hedglin, Row 3-Toole, Ratts, Rausch, Picket, Bailey, Hubbard, Hadley, Moser, Quilty, LaFara, C. I. Miller Row 4-Foszcz, R. Gruell, Sanders, Foszcz, K., Everage, Vinke, Keilman, Hanson, --, Fletter Row 5-Loyd, Jones, Schuerman, Fox, Moritz, Koontz, Hahn, --, Caven, Stump.

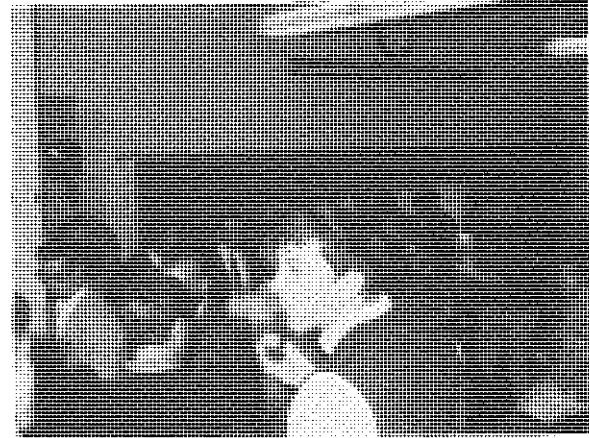


Club Officers: L. to R. Chuck Ratts, Scott Starkey, Brian McClelland, Bruce Wilhelm, and Harold Bruner.

Cal Stott, "father of Modern CFI, lecturing at Forestry Club.



Doughnuts, coffee, and a puff of smoke.



A meeting of the board at Stoney's!

FORESTRY AND CONSERVATION BANQUET

The time: March 8, 1968; the place: Purdue Memorial Union banquet room; the event: the 39th Annual Forestry and Conservation Banquet and Awards Program.

Given the setting just add faculty, representatives from all classes, foresters, wildlifers, and all their wives and guests and the conditions are perfect to reflect on the highlights of the year's activities. Toastmaster John Currens offically kicked off the evening by welcoming the hungry crowd and then leading the way to the serving tables. Everyone enjoyed swiss steak and all the trimmings with a choice of pies for dessert.

The post-dinner entertainment was presented by the Purduettes, directed by Bruce G. McGuire. They sang a medley of songs including one dedicated to Charlie Miller. Presentation of the annual honors followed immediately with the awards and their respective recipients:

- (1) XI SIGMA PI AWARD - given by the national forestry honorary to the sophomore with the highest scholastic record as a freshman. Recipient was HAROLD BRUNER given a cruiser's axe.
- (2) OUTSTANDING CAMPER AWARD - given by the Forestry Club to the outstanding camper at the 1967 Lost Lake Forestry Camp. JACK LOYD received a silva compass.
- (3) SPECIAL MERIT AWARD (FORESTRY) - awarded from the Stanley Coulter Funds to the forestry student contributing to forestry through extracurricular activities. An appropriately inscribed book was presented to MIKE MCGREEVY.
- (4) SPECIAL MERIT AWARD (WILDLIFE) - also awarded from the Stanley Coulter Funds to the student giving an outstanding contribution to wildlife conservation through extracurricular activities. WILLIAM KNAUER was the recipient of an inscribed book.
- (5) OUTSTANDING SENIOR AWARD - given by the Society of American Foresters to the outstanding graduating senior in forestry. RON OVERTON was honored by receiving a SAF lapel pin and a year's membership to the Society.
- (6) CHASE S. OSBORN WILDLIFE CONSERVATION AWARD - awarded to the man, who during the year, contributed the most to wildlife conservation in Indiana. A check was presented to a representative for Dr. A. A. Lindsey who was unable to attend.

Dr. Douglas Knudson highlighted the evening with a program on the forest resources potential in Brazil. His presentation centered around many colorful slides and he contributed many scientific as well as acute personal observations about the land and its people.

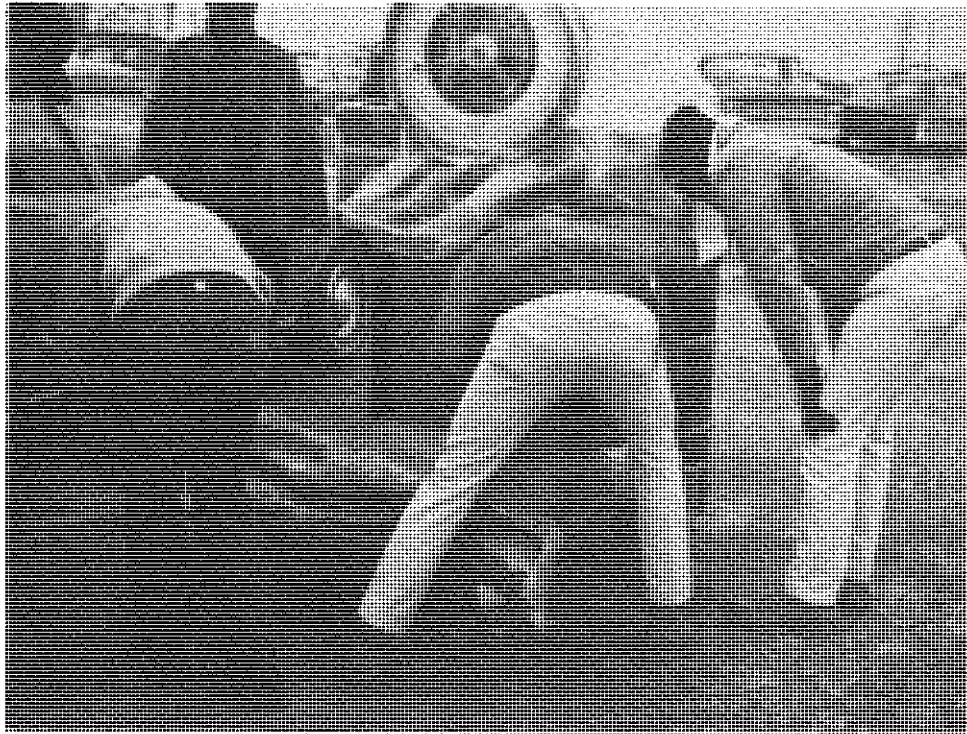
Jack H. Loyd

PURDUE'S WILDLIFE PROGRAM

The people of our nation have finally come to realize that wildlife is a part of our American heritage. Economically it is important due to the fact more than fifty-million sportsman contribute approximately four billion dollars worth of business annually to recreational facilities and industries. Aesthetically, no monetary value can be placed on wildlife. This is its real value. Due to the high population and industrialization of this country we now have the problem of forming a wise land-use policy to conserve and improve our renewable resources while using them at the same time. One of the first tools necessary in solving this problem is education and this is where Purdue comes into action.

The wildlife program at Purdue has come a long way since its beginning. In 1941 two wildlife courses, Forestry 40 and 41 were offered. In 1942 the wildlife program was a special curriculum open only to a few hand-picked individuals who showed strong interest and dedication in this field. Just two or three students were started each year until about 1956 when a full four year program was opened to all students. At the present there are approximately 100 undergraduate students enrolled in wildlife. Last semester twenty-two of them had a five point index or better and one had a six point. In the past year about eighteen students were graduated.

Students who have graduated from Purdue hold a wide variety of important jobs. At least three are now professors



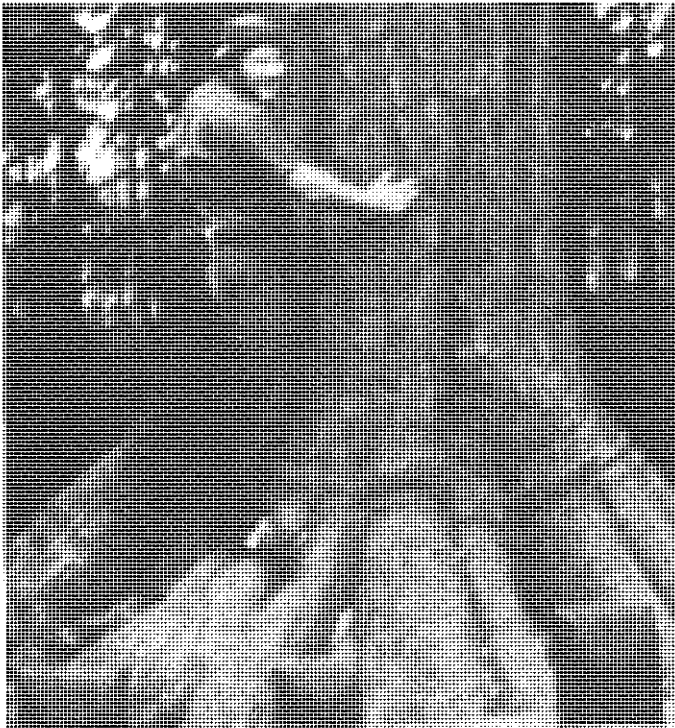
Crane Deer Check

in other universities. Five other Purdue men are here in Indiana working on the administrative side of wildlife management, all work for the Division of Fish and Game. Others have gone "where the action is" to work as managers in game areas and federal refuges. There is even one Purdue grad working for the Smithsonian Institute on the Pacific Bird Banding Program. This, too, doesn't begin to mention those who are presently in graduate schools doing research in wildlife.

The future of the wildlife option at Purdue is bright. There are plans to add two fishery biologists to the staff in 1969. It is anticipated that office and laboratory facilities be developed in part of the Agricultural Hall Annex. As long as there continues to be a growing interest and concern for the proper use of our nation's natural wealth, Purdue will be of even more importance since many of the technically trained professionals needed to manage these resources come from Purdue.

Jim A. Bottorff

MISCELLANEOUS



The MacArthur Pine and "Friend"

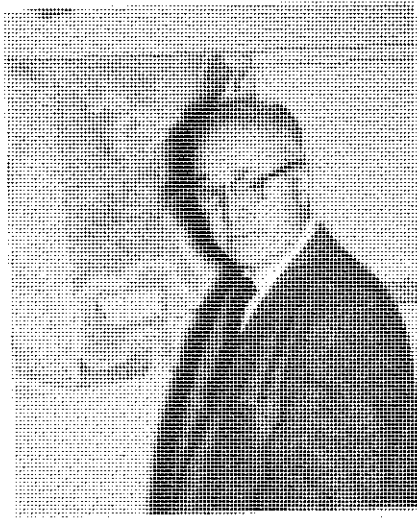
Buds From Summer Camp



Don Stump competes with Doc Bramble



FACULTY



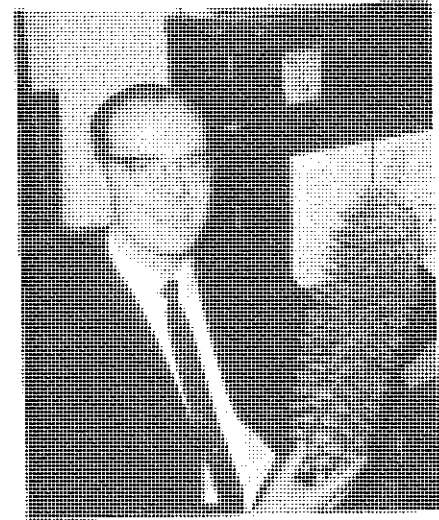
DR. DURWARD L. ALLEN, Professor of Wildlife Management, graduated from Michigan State University in 1937. He then joined the Game Division of the Michigan Department of Conservation as Biologist in charge of the Swan Lake Wildlife Experiment Station and then the Rose Lake Wildlife Service. After two years in this position he was made the Assistant Director of the Patuxent Refuge. In 1951 he became the Assistant Chief of the Branch of Wildlife Research, and from 1953 to 1954 he served as Chief of this Branch.

Dr. Allen came to Purdue as an Associate Professor of Wildlife Management and has been teaching Wildlife Conservation since that time.



DR. THOMAS W. BEERS, Professor of Forestry, is a graduate of Penn State University with a M. S. in Forest Management. He came to Purdue in 1956 in a research capacity, and received his Ph. D. here in 1960.

He has had varied experiences, having worked for the Forest Service one summer, worked two years part-time at Penn State, and spent two years with the Army Infantry in Germany. His current teaching assignments are in Mensuration and Forest Biometry. He is currently collaborating on a textbook in Forest Mensuration.



DR. WALTER F. BEINEKE, Assistant Professor of Forestry, graduated from Purdue in 1960, received a M. S. from Duke and a Ph. D. from North Carolina State. His major research is in tree improvement and physiology. Dr. Beineke teaches Dendrology and Genetics.



DON F. BLINE, Associate Professor of Agricultural Engineering, was an undergraduate at Purdue, where he received a Degree of B. S. in Forestry in 1939. He was awarded an M. S. in Forestry in 1939 from Purdue.

Professor Bline has worked for the U. S. F. S., Michigan Department of Conservation, and the Indiana Department of Conservation until entering the Army in 1942. In 1949 Professor Bline came to Purdue where he teaches elementary Drawing and Forest Surveying. He also taught surveying at summer camp from 1950 til 1966.

ROY C. BRUNDAGE, Associate Professor of Forestry, received his B. S. in Forestry from the State University of New York in 1925, and his M. S. in Forest Management from Michigan in 1930. He came to Purdue in 1930 and has been doing full-time work in Marketing Research.





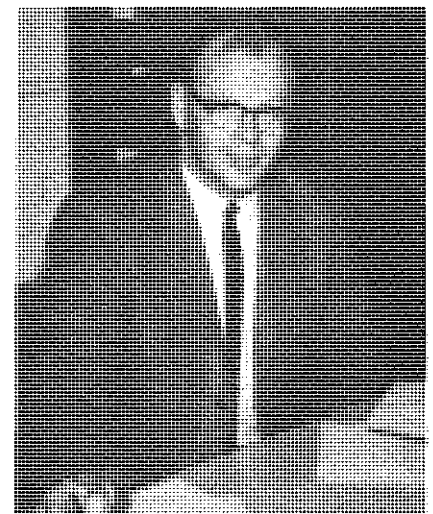
DR. WILLIAM R. BYRNES, Professor of Forestry, graduated from Penn State University in 1950 with a B. S. in Forestry, and received his M. F. in Forestry (1951) and his Ph. D. in Agronomy (1960) also from Penn State.

Dr. Byrnes has worked with the Soil Mapping and Farm Planning division of the Soil Conservation Service, and as a Research Assistant, Researcher, and Associate Professor at Penn State. Also to his credit are many articles and papers written or co-written by him. Upon coming to Purdue in July, 1962, he assumed research activities along with teaching Forest Soil and Water Management, Research Methods in Forestry, and Forest Typology.



DR. JOHN C. CALLAHAN, Professor of Forestry, received his B. S. in Forest Production from Michigan State in 1947. His M. S. in Silviculture was completed at Duke (1948) and his Ph. D. in Agriculture Economics was awarded from Purdue in 1955.

Before teaching, Dr. Callahan worked three years for the U. S. F.S. He has been teaching for the past thirteen years. At the present time he is teaching Forest Economics, Applied Forest Economics and the Economics of Small Woodlands. Dr. Callahan was a visiting scholar at the University of California and Collaborator at the Pacific Southwest Forest Experiment Station in 1961. During the summer of 1962 he served as a consulting economist for the U. S. D. A. In 1964 he was Chairman of the S. A. F. Division of Forest Economics and Policy. More recently he has served as consultant to the National Advisory Commission on Food and Fiber.



CARL A. ECKELMAN, Instructor in Wood Utilization, received his B. S. in Forestry and his M. S. (1962) both from Purdue. He is teaching Fluid and Chemical Relations in Fibrous Materials, Wood Seasoning, and Wood Preservation, as well as Wood Using Industries at Summer Camp. He is also conducting research in the wood lab.

FORREST GOODRICK, Instructor in Wood Utilization, received a B. S. F. in 1956 and an M. S. (1962) at Auburn University. He has worked with the U. S. Forest Service and at Auburn University in research. Currently he is working on a Ph. D. in the Wood Research Lab.



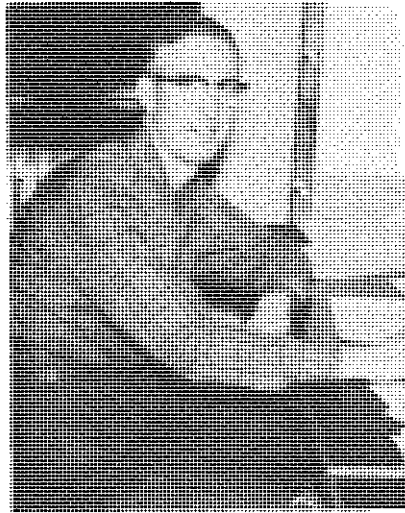
DR. RONALD L. GIESE, Assistant Professor of Entomology, received a B. S. degree and a Ph. D. Degree in Entomology and Plant Ecology at the University of Wisconsin.

Dr. Giese has worked in Idaho for the U. S. F. S. and in Wisconsin and Michigan for the Lake States Experimental Station. Dr. Giese came to Purdue in 1960 and is now teaching introductory Forest Entomology and Advanced Forest Entomology

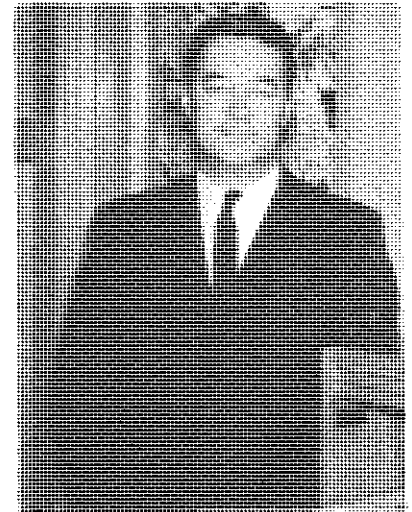




MICHAEL O. HUNT, is an assistant professor at Purdue. Mike is known professionally as an Extension Specialist of Wood Utilization. He received his B. A. Degree from the University of Kentucky in 1957 and his M. F. in Wood Technology from Duke University in 1958. Before Mike came to Purdue in 1960, he was employed in the Product Department of Pionsett Lumber and Manufacturing Co. located in Pickens, S.C.



DR. CHARLES M. KIRKPATRICK, Professor of Wildlife Management, received his B. S. Degree from Purdue in 1938 and his Ph. D. from the University of Wisconsin in 1943, both in Zoology. Since 1941, he has been doing research in Wildlife Biology, and was in charge of wildlife course work at Purdue from 1941 to 1954. In 1961 he returned to instructional work by assuming responsibility for the Game Management course.



DR. ALTON A. LINDSEY, Professor of Biology, graduated from Allegheny College with a B. S. Degree in Biology in 1929. He received a Ph. D. in Botany from Cornell University in 1937. Dr. Lindsey has worked as Ranger Naturalist in Glacier and Mt. Ranier National Parks. He was a member of the Biology Department of the Byrd Antarctic Expedition in 1933 to 1935, and he also accompanied the Purdue-Canadian Arctic Permafrost Expedition in 1951. Before coming to Purdue he taught at Cornell University and at the University of New Mexico. He now teaches Forest Ecology.

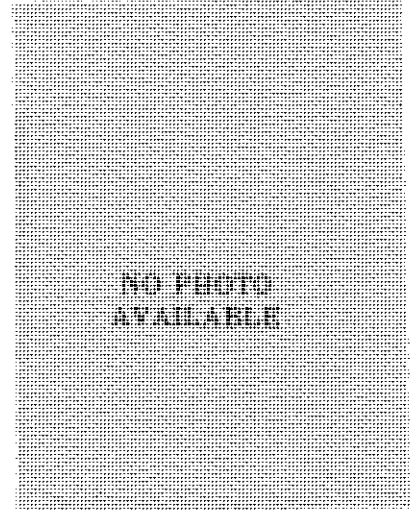
DR. DOUG KNUDSON, assistant professor of Forestry received his B. S. and M. S. in 1959 and 1960 respectively from Colorado State University. He received his Ph. D. from Purdue in 1965, and is currently teaching Outdoor Recreation Administration.



DR. CLAIR MERRITT, Associate Professor of Forestry, received his degrees from the University of Michigan, a B. S. in Forest Production (1943), M. F. in Forest Utilization (1948), and a Ph. D. in Silviculture (1959). He came to Purdue in 1956 and is now teaching Forest Protection, Practice of Silviculture, Regional Silviculture, and Forest Typology.



DR. WILLIAM W. MCFEE, Associate Professor of Soils, received his B. S. from the University of Tenn. in 1957 and his M. S. and Ph. D. from Cornell in soils. He is currently teaching Forest Soils and doing research in the same.



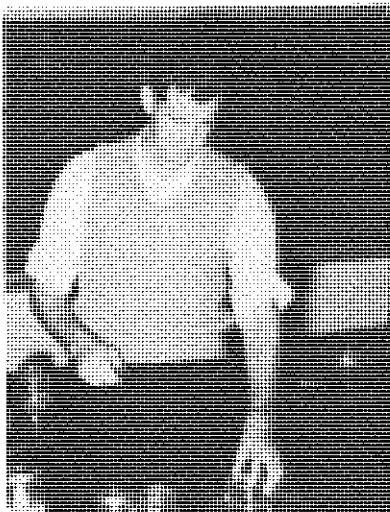


HOWARD H. MICHAUD, Professor of Conservation, was graduated from Bluffton College in 1925, receiving a B. A. in Biological Science. His graduate work was done at Indiana University where he received a M. A. in Zoology in 1930.

Professor taught high school biology in Fort Wayne, Indiana from 1927 to 1944. In 1934, he became the Chief Naturalist of the Indiana State Parks, a position he held during the summers until 1944. He came to Purdue in 1945, and is currently teaching Conservation and Forest Recreation.

DR. RUSSELL E. MUMFORD, Associate Professor of Wildlife Management, received all of his degrees from Purdue, B. S. in 1948, M. S. in 1952 and his Ph. D. in January of 1961.

Dr. Mumford was a professional research biologist for five years with the Indiana Department of Conservation. He taught one year with the Florida Audubon Society, and one year at the University of Michigan.



CHARLES I. MILLER, Professor of Forestry, graduated from University of Michigan in 1938 with a B. S. in Forestry. In 1940, he completed his Master's work at the University of Idaho.

Following his graduation from Idaho, Professor Miller worked two years estimating timber and making logging studies for Potlatch Forest, Inc. He spent the next four years in the U. S. Marine Corps, and when released held the rank of Lt. Col. USMCR. Professor Miller came to Purdue in 1946 and has been very active in many phases of Forestry work. Courses he has taught include Logging and Milling, Forest Mensuration, Increment, and Forest Aerial Photogrammetry. He has also spent nine or ten weeks of every summer for many years as the Camp Director at Lost Lake Forestry Camp.

ROBERT H. PERKINS, Instructor in Forestry received both his B. S. and M. S. from Purdue and is currently teaching Logging and Milling.

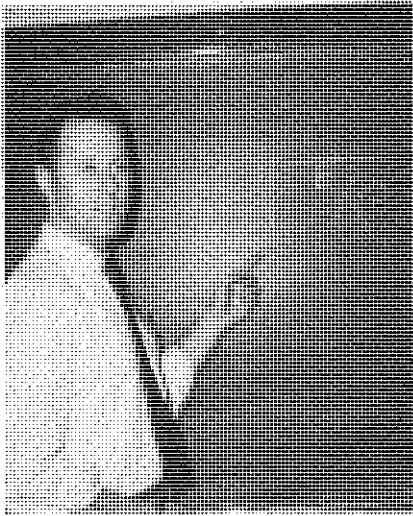


DR. JOHN MOSER, Assistant Professor of Forestry, received his Ph. D. from Purdue in 1967. He teaches Forest Management, Computer Sciences and is engaged in Mensurational Research.

DR. CHARLES C. MYERS, Assistant Professor in Forestry, received a BSF degree in 1960 from West Virginia University, and MS in 1962 in Forest Management from Syracuse University, and a Ph. D. from Purdue.

Dr. Myers joined the Purdue Staff in 1961. He teaches Forest Conservation, does research in Forest Management, and is connected with the Federal Extension Service.

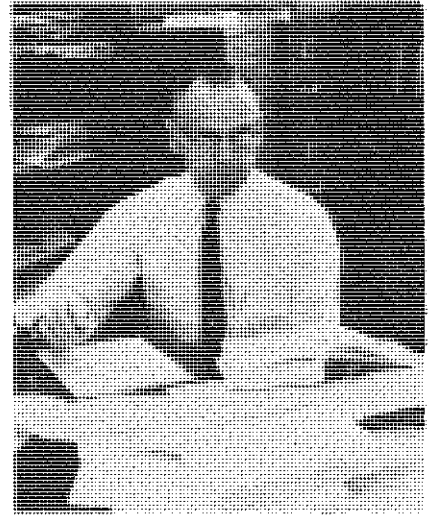




JOHN F. SENFT, Instructor in Forestry, received his B. A. and M. F. from Penn State University. At Purdue he is teaching Plywoods and Related Products, Mechanical Properties of Wood, and Physical Properties of Wood. Also he is doing research in the Purdue Wood Research Laboratory.



DR. STANLEY K. SUDDARTH, Professor of Forestry, received his B. S., M. S. and Ph. D. from Purdue. He is a Registered Structural Engineer, also. Dr. Suddarth did research on bombing effectiveness under a U. S. Air Force contract at Purdue, and since 1954 he has been doing research in the Purdue Wood Research Lab. He has taught mathematics and is now teaching Physical Properties of Wood.



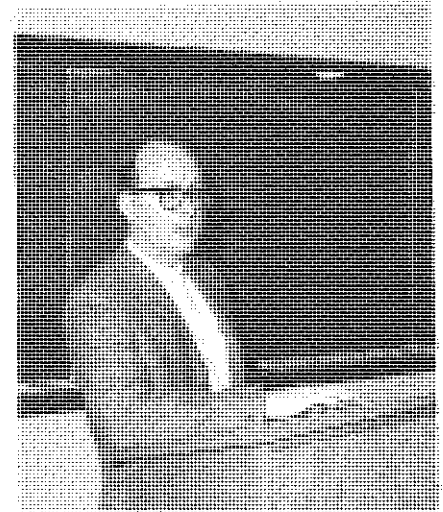
DR. ERIC W. STARK, Professor of Forestry, received his B. S. from Purdue in 1932, his M. S. from the State University of New York in 1934, and his Ph. D. from the same in 1952 in Wood Technology.

Dr. Starks experience includes three years in Forest Products Research with the Texas Forest Service and teaching positions since 1937 at the University of Idaho, New York, and Purdue. His current courses are Wood Technology, and Forest Products, and since 1960 he has been responsible for scheduling and registering of forestry students.

BRUCE B. BARE, Instructor in Forestry, graduated from Purdue in 1964 with a BSF. In 1965, he graduated from the University of Minnesota with a MS. degree. Bruce returned to Purdue to work towards his Ph. D. under Dr. Hall in 1966. Currently he is assisting with forest management and teaching financial control. He is also working in the Natural Resources Simulation Lab where he and Dr. Hall developed the Purdue Forest Management Game. Bruce's Ph. D. dissertation concerns an evaluation of the role of information on managerial performance using the forest management game.



JAMES L. COLLOM, Instructor in Forestry, received the A. A. S. degree from Paul Smith's College, and B. S. and MS degrees from the University of Maine in 1963 and 1965 respectively. Jim joined the department in 1967 after spending a year and a half teaching forestry in Brazil. He is currently teaching Forest Conservation on campus and at the regional centers, via T. V. Jim plans to return to Brazil in 1969 for an additional two year period.



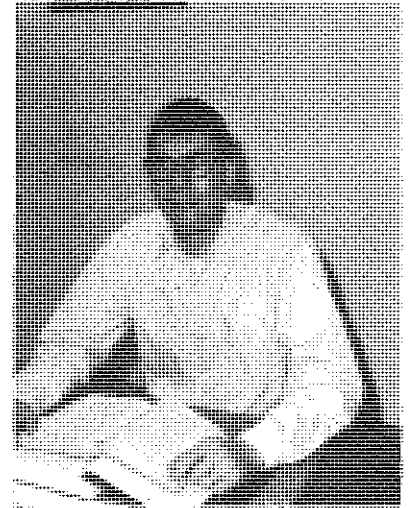
GRADUATE STUDENTS

NO PHOTO
AVAILABLE

MARSHALL ASHLEY: Marshall is working on his Ph. D. in Mensuration under Dr. Beers.

NO PHOTO
AVAILABLE

JAMES W. BALSIGER, a graduate of Michigan Tech in 1966. James is working on his M. S. under Dr. Merritt on the qualitative analysis of Silvicultural Systems, namely Forest Stand Ordination



KENNETH BROWN, a graduate of Michigan Tech in 1966 is working on his M. S. in Silviculture under Dr. Merritt.

DAVID B. FIELDS Received his B. S. and M. S. from the University of Maine. He is currently working on his Ph. D. in Economics under Dr. Callahan.



NO PHOTO
AVAILABLE

DICK HASKETT is working towards his Master's under Dr. Michaud.

NO PHOTO
AVAILABLE

WENDELL JOHNSON is working on his Ph. D. in population ecology under Dr. Allen.

NO PHOTO
AVAILABLE

R. H. KALVELAGE is working on his M. S. under Dr. Michaud.

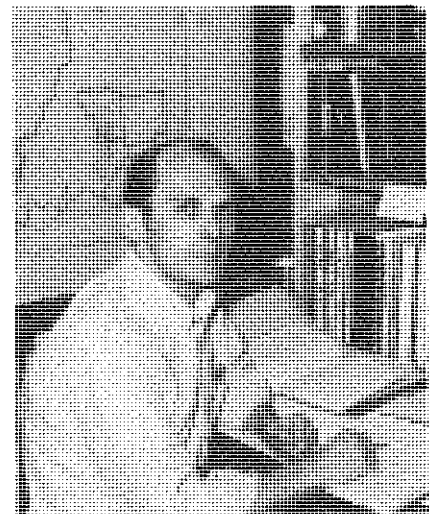
J. H. Miller is working on his M. S. under Dr. Byrnes.

JOHN MUEHRCKE is studying Ruffed Grouse Ecology under Dr. Kirkpatrick.

ROGER NACKER received his B. S. and M. S. from Southern Illinois University and is currently working on his Ph. D. in Economics under Dr. Callahan.

NO PHOTO
AVAILABLE

NO PHOTO
AVAILABLE



NO PHOTO
AVAILABLE

ELDON NORMAN; Eldon is currently working on his Master's Degree in Forest Management.

NO PHOTO
AVAILABLE

ED OVERTON is working on his Ph.D. in Forest Economics under Dr. Callahan.

NO PHOTO
AVAILABLE

FRED STORMER, a graduate of Penn State is working on his Ph. C. under Dr. Allen.

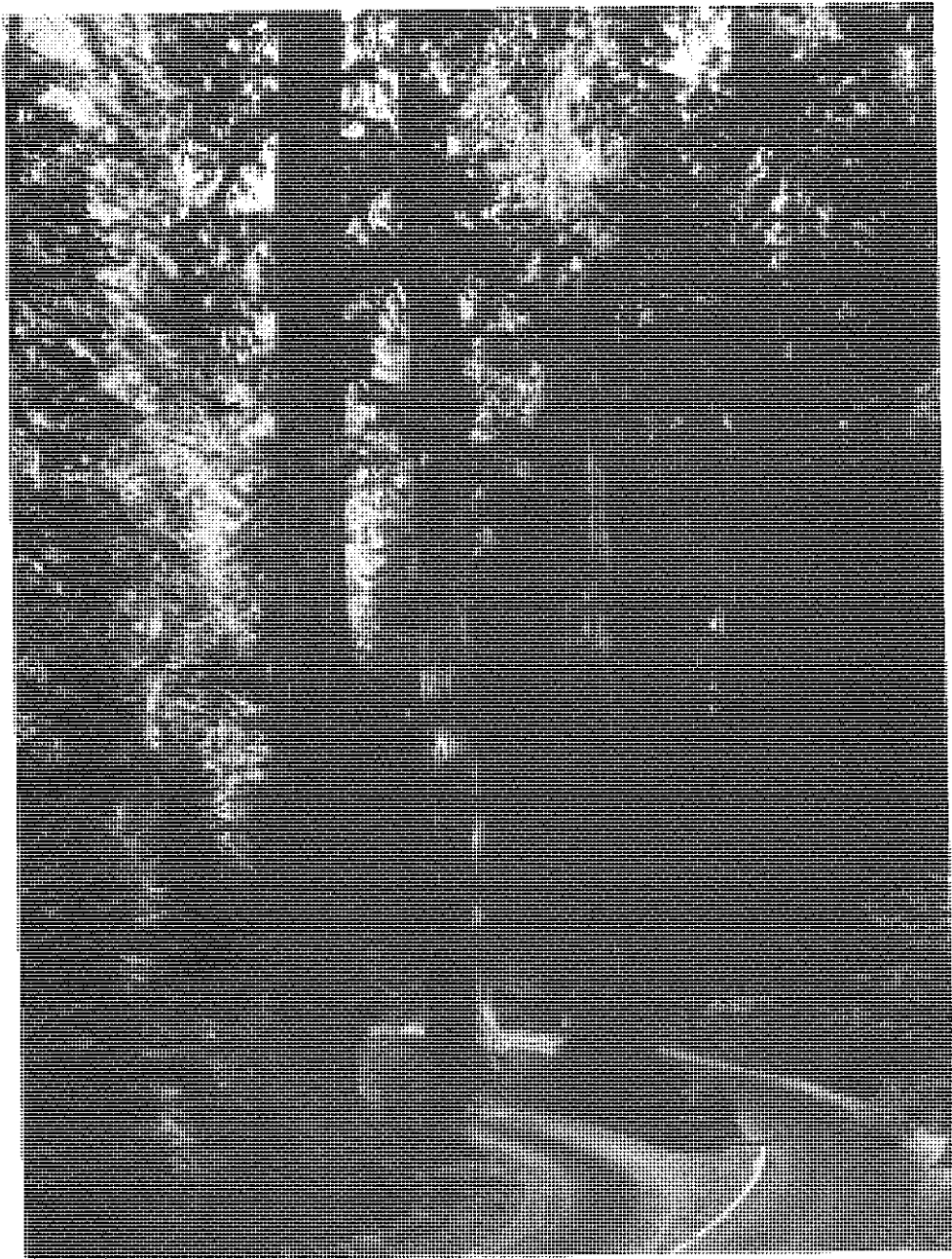
DON REIMER a graduate of Arizona state with a B. S. F. and Yale with a M. F. in 1966. He is currently working on his Ph. D. in Economics under Dr. Callahan.

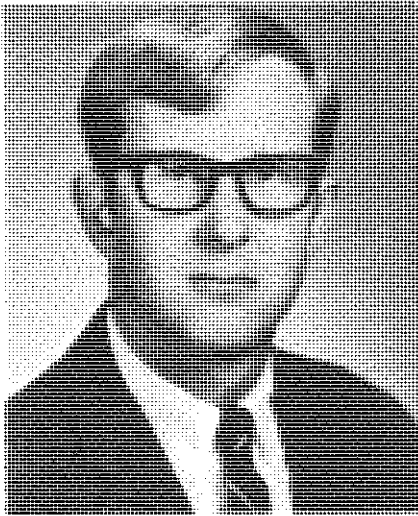
MICHAEL WOLFE is studying Moose-Wolf Ecology on Isle Royale under Dr. Allen.



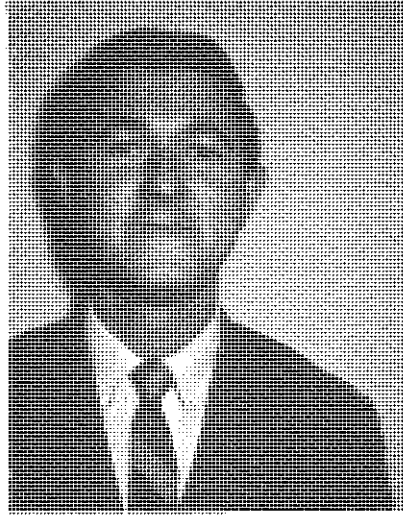
NO PHOTO
AVAILABLE

SENIORS

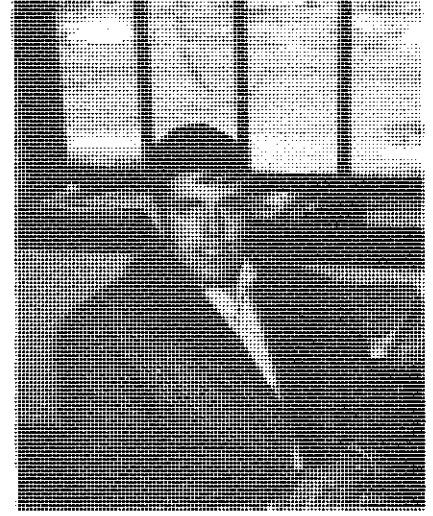




MIKE BALDWIN
Carmel, Indiana
Army ROTC, Forestry Club, Xi
Sigma Pi, Alpha Zeta, S. A. F.

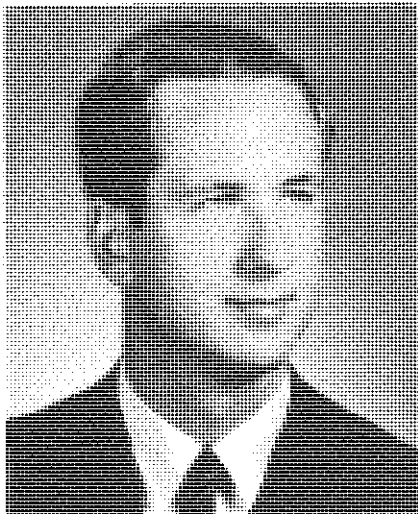


JOHN BERTRAM
Plainfield, Indiana
Xi Sigma Pi, Camp-1967, Work
Study, S. A. F.

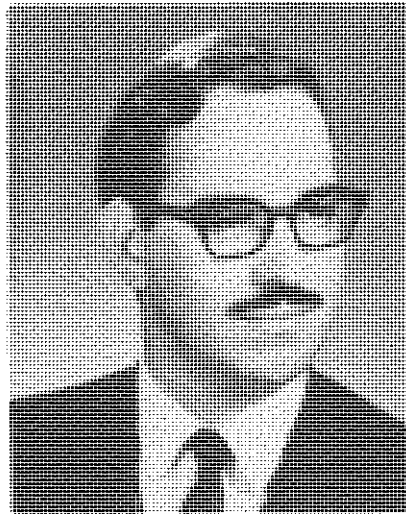


JOSEPH BILLOT
Cayuga, Indiana
Camp-1967, Army ROTC, S. A. F.

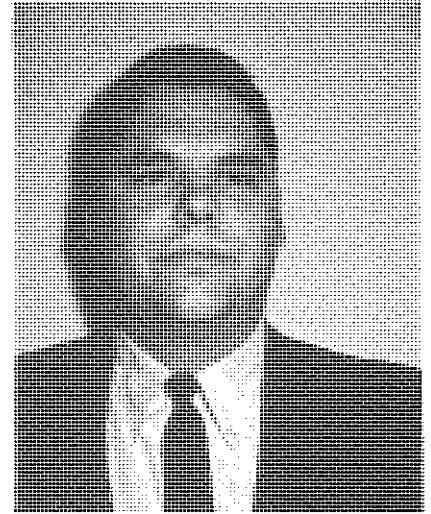
JOHN BURKHART
Lafayette, Indiana
Camp-1967, S. A. F., Forestry
Club, Inyo N. F., Calif.

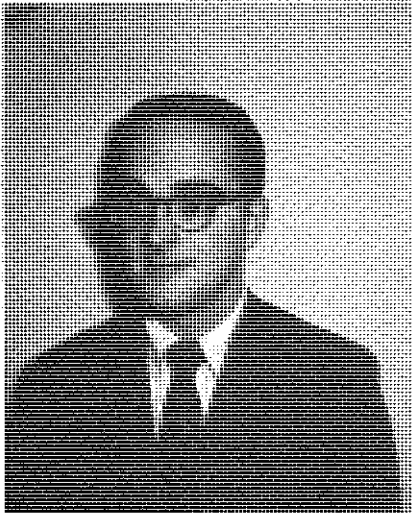


CHARLES COFFMAN
Franklin, Indiana
Forestry Club, Wildlife Club,
Canoe Club, Purdue Geoscience
Society, S. A. F., Alpha Phi
Omega-Treas.



BRUCE FINKBINER
Greencastle, Indiana
S. A. F., Forestry Club, Conclave-
68, American Society of Photo-
grammetry.

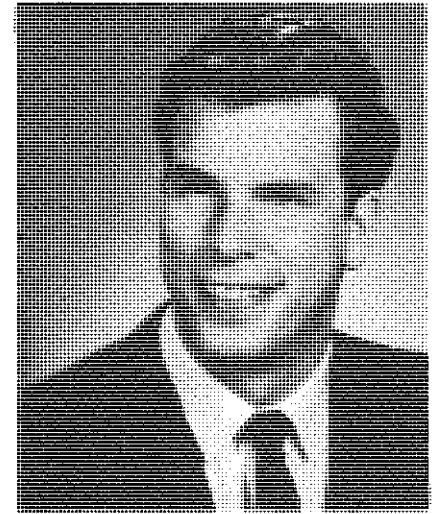




BERNELL FISCHER
Hammond, Indiana
Camp-67, Forestry Club, Xi
Sigma Pi -Sec. -Fiscal Agent.

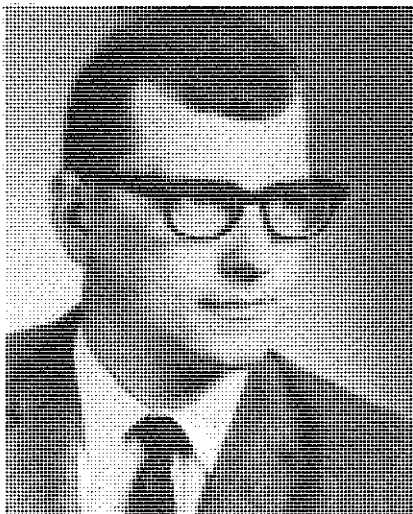


JAMES D. FOX
Anderson, Indiana
Xi Sigma Pi -Ranger, Camp-68,
Special Merit Award -69, For-
estry Club, S. A. F.

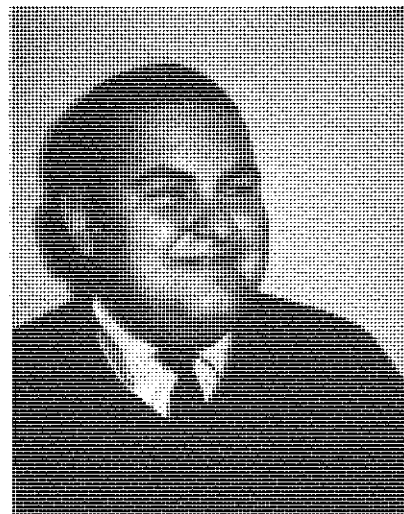


RICHARD HAHN
Evansville, Indiana
Alpha Zeta, Xi Sigma Pi -Asst.
Forester, Forestry Club, S. A. F.,
Camp-67 Wasatch N. F. -66,
Pacific Northwest Exp. Sta. -1968.

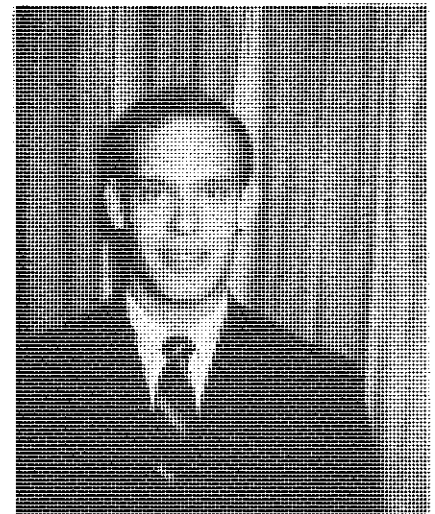
CHARLES HEDGLIN
Pleasant Lake, Indiana
Camp-67, Forestry Club, S. A. F.
Monongahela N. F. --W. Va.,
Conclave -68, Malheur N. F. --
Ore.

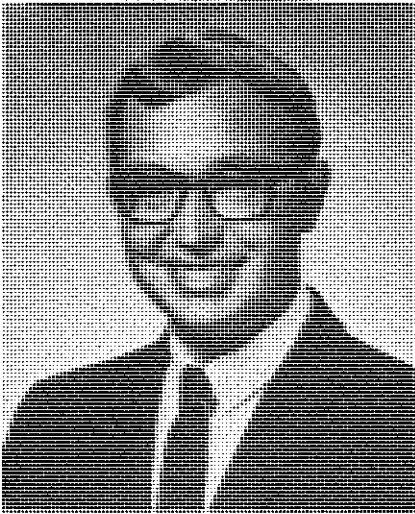


ROBERT HITTLE
Indianapolis, Indiana
S. A. F., Forestry Club, Band-65,
Shawnee N. F. # Ill., Nez Perce
N. F. *-Idaho.



ALAN R. HUTSON
Brookston, Indiana
Xi Sigma Pi, Forestry Club, LOG-
Senior Assistant, Weyerhaeuser
Intern Program-68, Summer Camp-
67, S. A. F. Conclave-67, Basket-
ball Team.

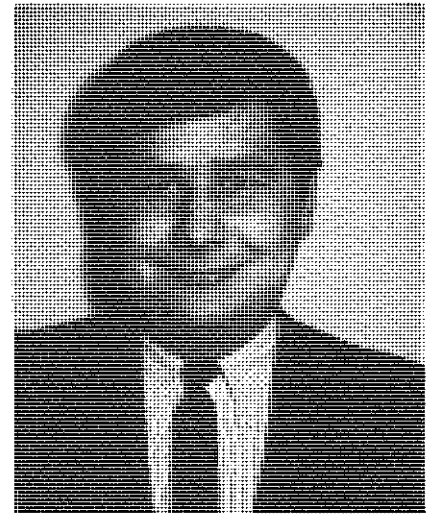




EUGENE KLINGAMAN
Columbia City, Indiana
Xi Sigma Pi, Farmhouse, Alpha
Zeta, Camp--67.

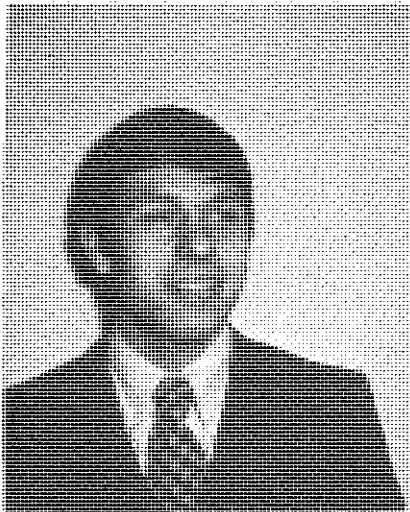


DAVE JENKINS
Kokomo
S. A. F. , Forestry Club, Camp-
68.

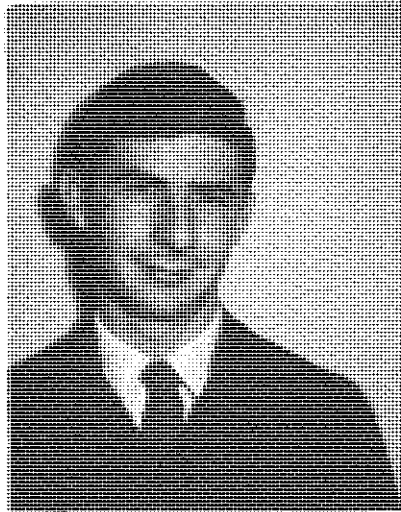


JAMES JURICIC
Hammond
S. A. F. , Pi Kappa Alpha, Camp-
67.

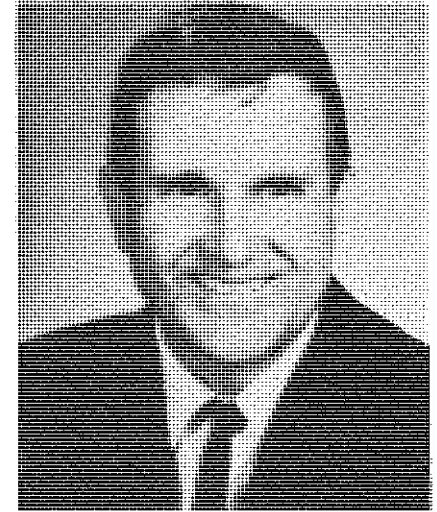
GREG KOONTZ
La Paz
S. A. F. , Camp-67, Conclave-
68, Wayne N. F. Ohio, Forestry
Club, Grand Prix Driver -67, 68,
69, Forestry Basketball Team.

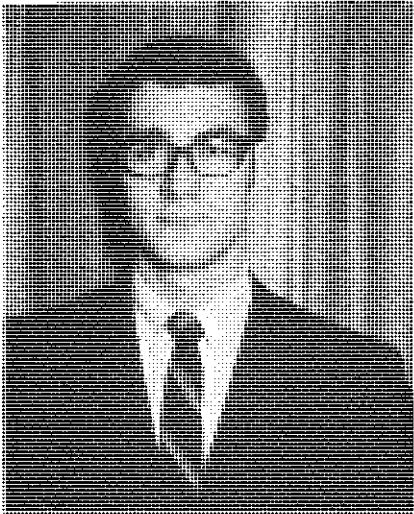


ROBERT LAFARA
Whiteland
S. A. F. , Forestry Club, Con-
clave-68, Sylvania Preserve-68,
Camp-67.

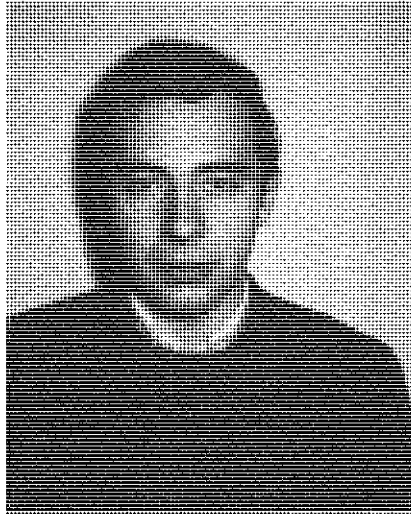


JOHN LINDERMAN
Greensfork, Indiana
Camp-68, S. A. F.

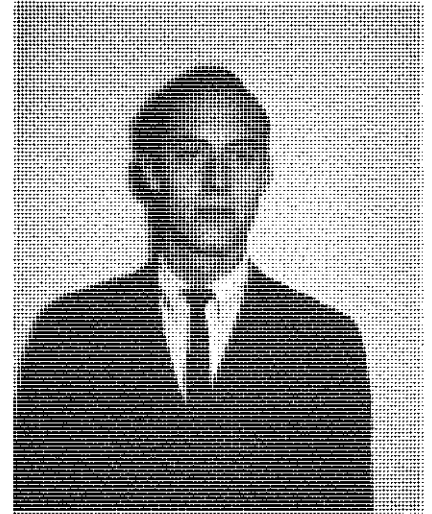




JACK LOYD
Phi Eta Sigma, Xi Sigma Pi
Award, Outstanding Camper
Award, Outstanding Senior
Award, Xi Sigma Pi-Forester,
Forestry Club, U. S. F. S.,
Huron-Manistee N. F. , Work
Study, Camp-67, Conclave-68,
Forestry Basketball Team.



THOMAS LYONS
Logansport, Indiana
Forestry Club, Camp-68.

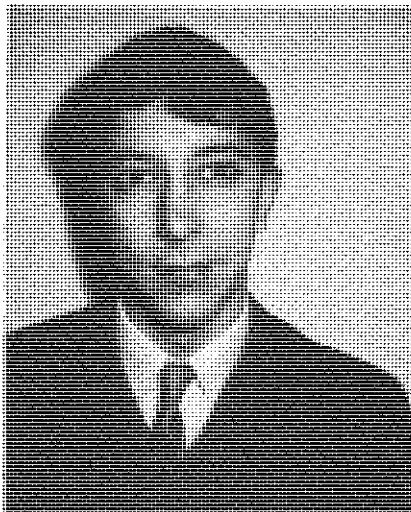


BRIAN McCLELLAND
Speedway, Indiana
Camp-67, Basketball Mgr. ,
Forestry Club-V. P. , Log-Bus.
Mgr. , Conclave -68.

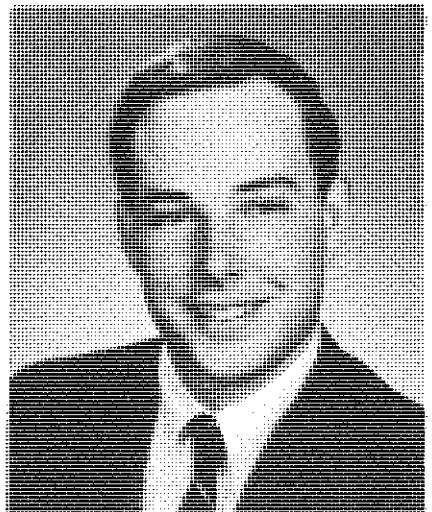
JOHN MORITZ
Indianapolis, Indiana
Forestry Club, Camp-67, Banquet
Chairman-69, S. A. F. , Conclave-
68.

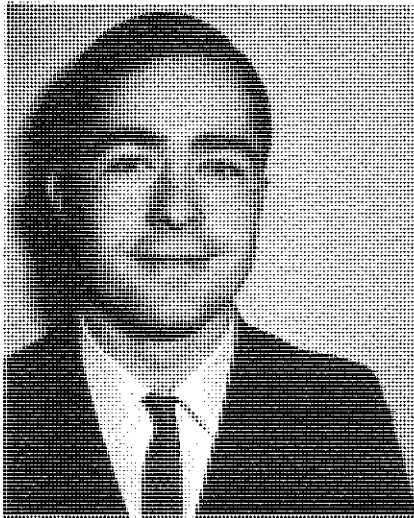


CHARLES RATTS
Salem, Indiana
S. A. F. , Xi Sigma Pi, Alpha Zeta,
Forestry Club-Sec. , Camp-67,
Corps of Engineers-68, Conclave -
68, Log-Advertising Mgr. , Forestry
Basketball Team.

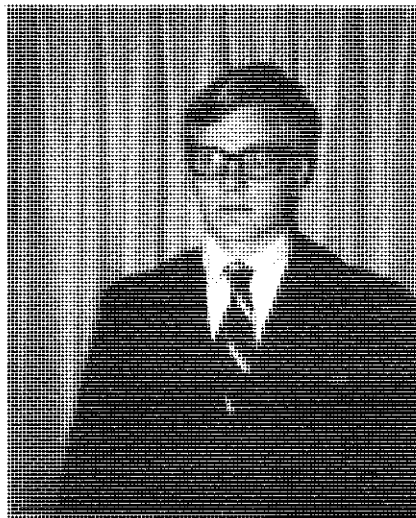


THOMAS ROBERTS
Valparaiso, Indiana
Camp-67, Counselor -Cary Hall.

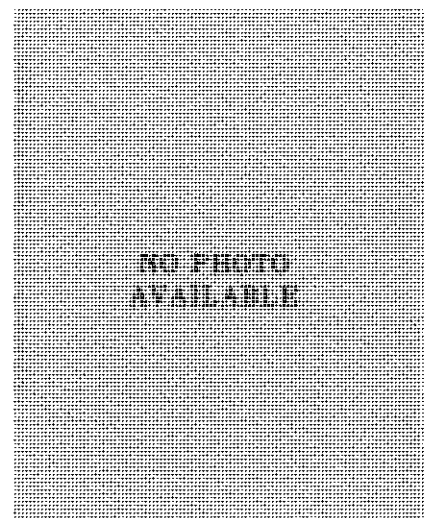




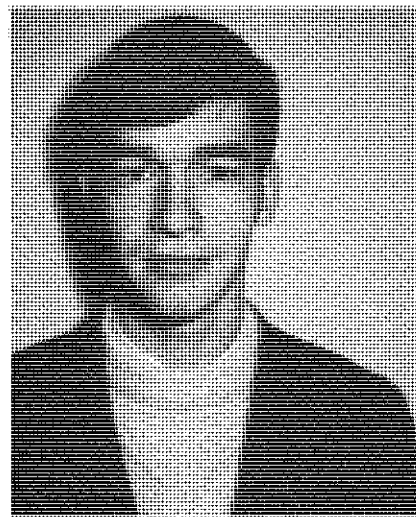
MARVIN SHONK
Clay City, Indiana
Camp-67, Forestry Club, Work-
Study.



SCOTT STARKEY
Carmel, Indiana
Forestry Club-Pres., Camp-67,
Conclave-68, Weyerhaeuser In-
tern Program-68, Log-Photo
Editor, S. A. F., Xi Sigma Pi.



MICHAEL TANSY
Greenfield, Indiana
Camp-67, Forestry Club, U. S. F.
S. Colorado-68.



MICHAEL THOMAS
Pendleton, Indiana
Camp-67, Forestry Club.

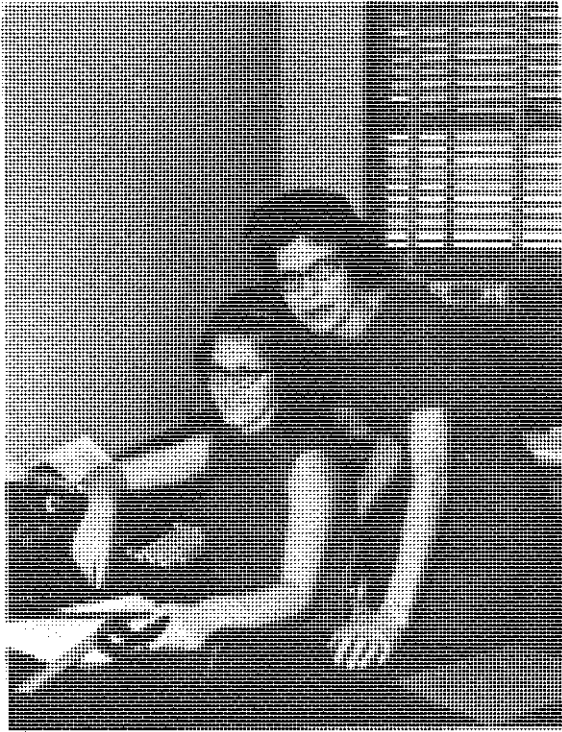
THOMAS QUILTY
Goshen, Indiana
Camp-68, Forestry Club.

OUR DEAN



DR. WILLIAM C. BRAMBLE -Dean of the Forestry and Conservation School and Faculty Advisor -PURDUE LOG.

OFFICE STAFF



Connie Kelly and Joyce Hiday



Cathy Firebaugh and Mrs. Schellinger



Mrs. Losey-Librarian

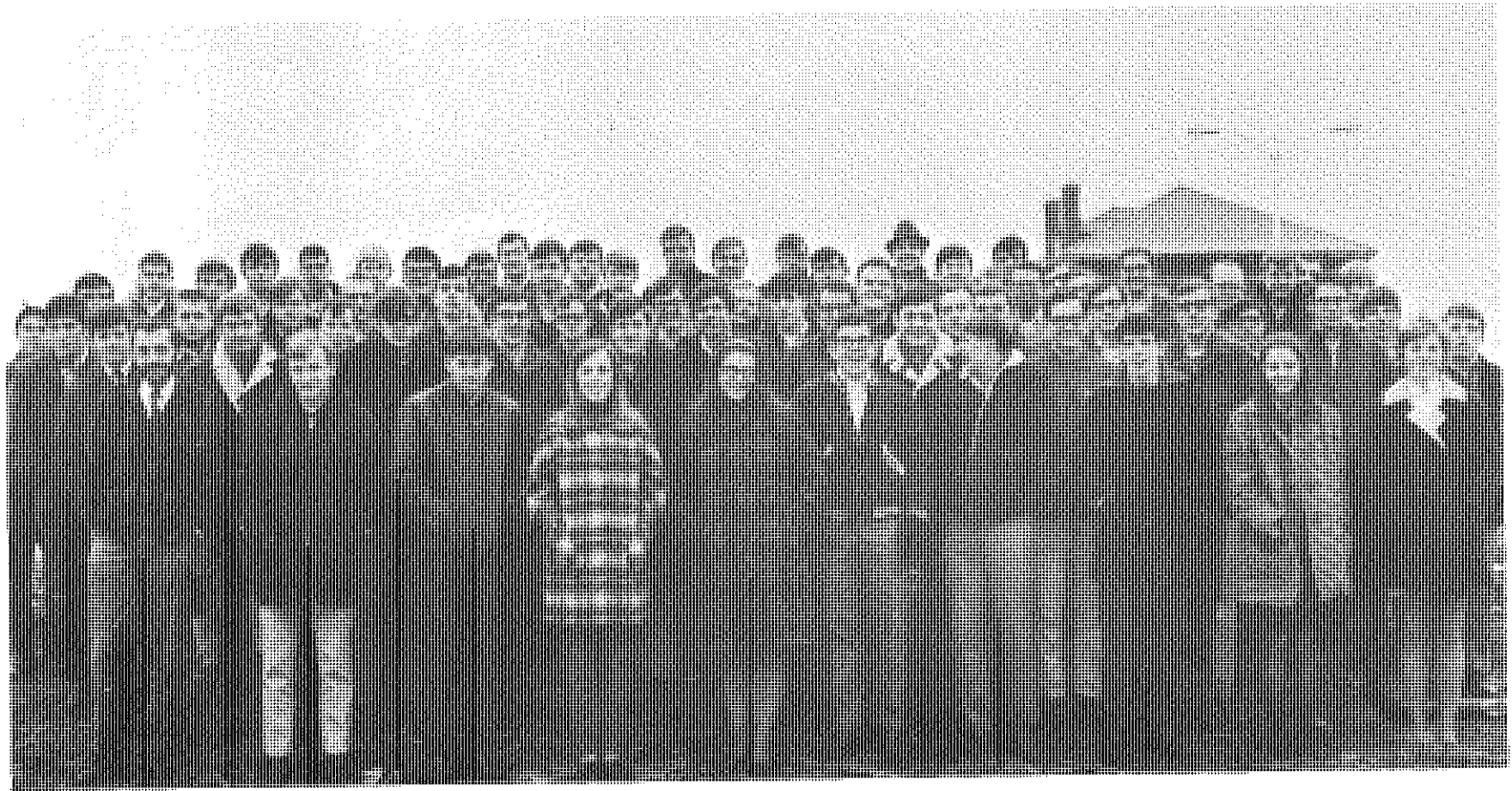


UNDERGRADUATES



FRESHMEN

Row 1-(L to R) McCreery, Hart, McDill, Armbruster, Taylor, Sparks, Cook. Row 2-(L to R) Bery, Spitler, Miller, Thorne, Stevens, Hubbuck, Schimmelpfennig, Watt, Yokel, Murray. Row 3-(L to R) Nelson, Redinger, Sprague, Cunningham, Priest, NA, Keilman, Hay, Drudge, Bebler, Johnson, Radloff, Britton. Row 4-(L to R) Eler, Major, Shaw, King, McKain, Graham, Clark. Row 5-(L to R) Klockmann, Grubbs, Busghadt, Heine, Ullman, Campbell, Snodgrass, Dooley, Metcalf, Eder, Fehd, Burton, Burwell, Parker, Smith, Agnew, Bible, Anderson, Maxwell, Ricketts, Mulligan, N/A Mann, Gillespie, Schwartz, Ranay, Leighty, Langmeyer, Eklund. Row 6-(L to R) Juday, Barker, Burroughs, Dunman.



SOPHOMORES

Row 1-(L to R) Williams, vonDielingen, Cook, Ott, Yant, Kirkman, Huntley, Graham, Hakley, Deatline. Row 2-(L to R) Hargett, Evans, Hayer, Dooley, McMahon, Armstrong, Ross, Keilman, Zimmerman, Keck, Bailey, Keyler. Row 3-(L to R) Foszcz, R., Jacobs, Gruell, Judd, Hopwood, Ash, Mars, Wagner, Heisterberg, Beougher, Edison, Moore, Erler, Hollingsworth, Siebrase, Leighty. Row 4-(L to R) Thomas, Ritter, Beck, Stimak, Bean, Foszcz, K., Hirstein, Brondsasse, Lostutter, Richert, Heath, Vanada, Kohut, Zugbaum, Radloff, Vinke, Johnson, Thorne, Wesson, Ross, Farmer, Kennedy, Reed, Hook, Fletter, Hrintd, Hudak, Bowman.



JUNIORS

Row 1-(L to R) Hanson, Bruner, Hubbard, Snyder, Stump, Kummer, Dwyer, Clymer. Row 2-(L to R) Linville, Alderfer, Trosky, Martin, Hill, Bourke, Carter, Sanders, Pickett, Everage, Schuerman, Jones, Rausch, Toole, Barnhart.



ADVERTISING

HOLMES & CO., INC.

Manufacturers and Wholesalers

Lumber and Veneer

Columbia City, Indiana

T. A. FOLEY LUMBER CO., INC.

Manufacturers of Hardwood Lumber

Paris, Illinois

Lashorne-Walsh Lumber Company Inc

227 East High Street

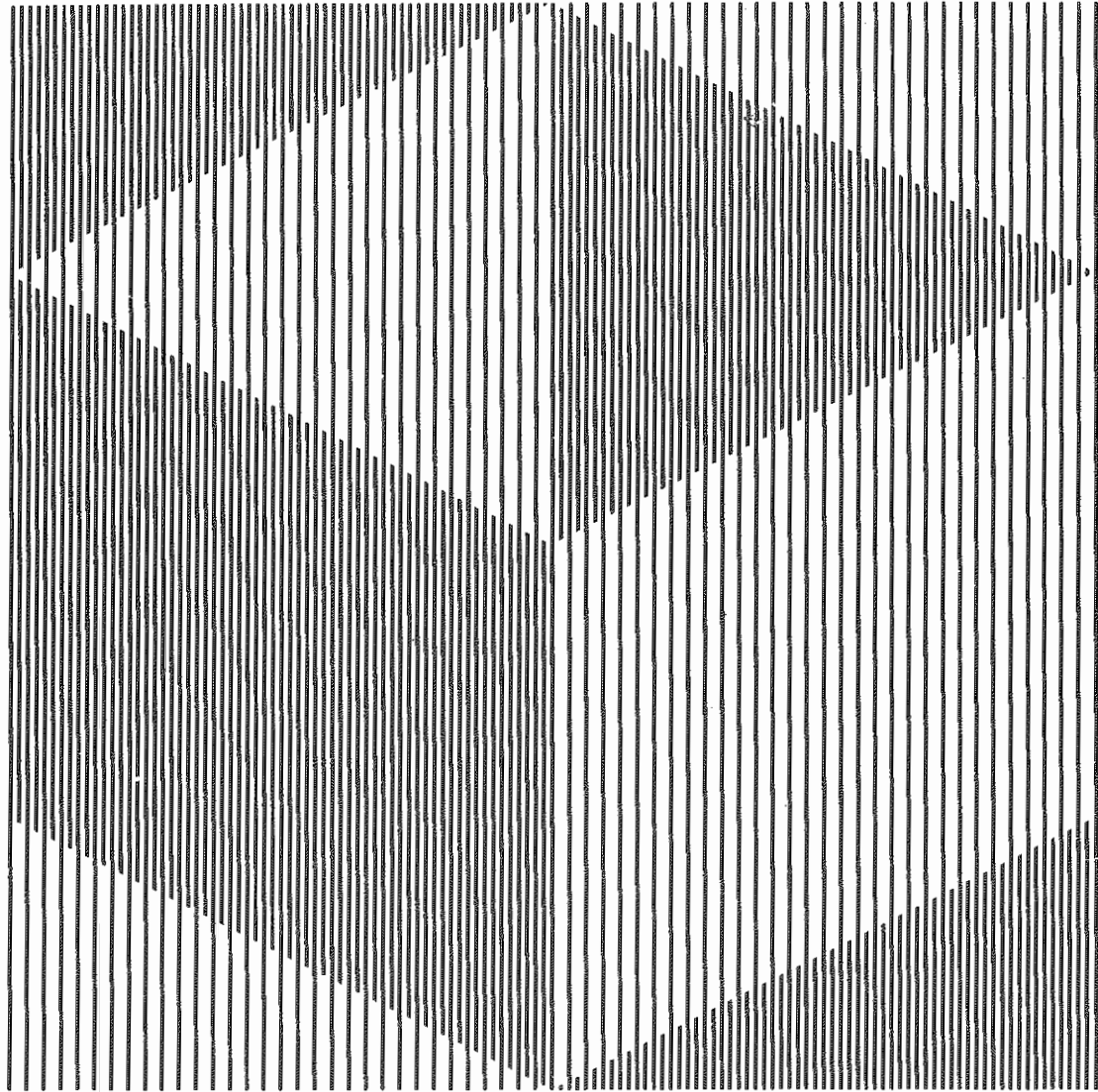
Lexington, Kentucky

Phone: Area Code 606--255-7660

Appalachian Hardwoods

Furniture Dimension, Furniture Squares, Frame Stock,

Ladder Rung Stock, Dowels

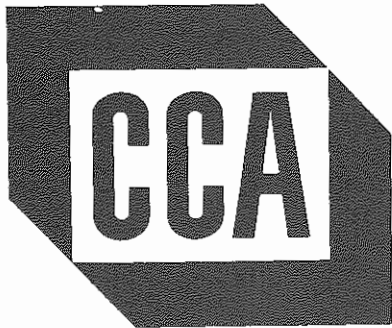


Container Corporation nurtures

People

Ideas

Woodlands



Container Corporation of America

An open letter to Purdue Foresters from Jim Craig, Forestry '36



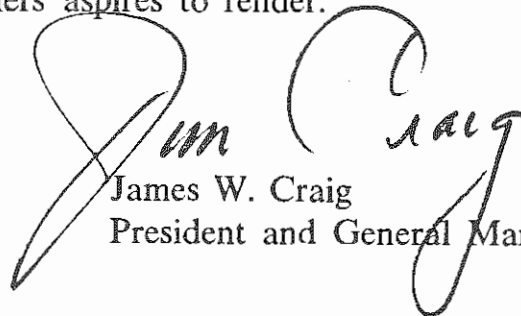
What is your idea of greatness? You say, "He's a great guy," or "That's a great outfit."

What do you consider, in either a man or a company, as the attributes of greatness? STOP NOW! Make a list of the distinctive features, the outstanding characteristics, the especial qualities that you associate with greatness. Then analyze the items you've listed.

Maybe you will find, as I have, that you are really analyzing yourself. For each of us tends to measure by his own self-stick.

One characteristic I have noted, in men and organizations I've considered great, is humble, honest, dedicated service. That's what Forestry Suppliers aspires to render.

May we serve you?



James W. Craig
President and General Manager

"What you need, when you need it"

Professional
forestry, engineering,
industrial supplies.

SHIPPED WORLDWIDE.

Write for illustrated catalog.



Forestry Suppliers Inc.

205 W. RANKIN ST. / BOX 8397
JACKSON, MISSISSIPPI 39204

ECKSTEIN LUMBER, INC.

MANUFACTURERS OF
BAND-SAWN INDIANA HARDWOOD LUMBER

P.O. BOX 28
JASPER, INDIANA
PHONE 84

JOHN I. SHAFER HARDWOOD CO.

LOGANSPOUT, INDIANA

INDIANA HARDWOODS - KILN AND AIR DRIED . . . IMMEDIATE WAREHOUSE AND DIRECT MILL SHIPMENTS

Pike

Since 1904

LUMBER COMPANY, INC.

AKRON, INDIANA • 46910 U. S. A.

MANUFACTURERS, WHOLESALERS AND DISTRIBUTORS OF FINE HARDWOODS

OUR BEST TO THE 1969 FORESTER GRADUATES HILL BROS. VENEER CO., INC.

A DIVISION OF HAMMERMILL PAPER CO.
EDINBURG, INDIANA

MANUFACTURERS OF QUALITY FACE VENEERS
BUYERS OF WALNUT AND HARD MAPLE TIMBER AND LOGS

IN THE LAND OF THE FORESTER IT'S NEL-SPOT
THE NELSON PAINT COMPANY

THREE PLANTS TO SERVE YOU

Box 349, Iron Mountain, Michigan

Box 1892, Montgomery, Alabama

Box 402, McMinnville, Oregon

ATLAS HARDWOOD PRODUCTS CO.

Affiliate of

Paul Watts, Incorporated
2525 Kroger Building Cincinnati, Ohio 45202 Phone: 621-5680

Ready and Eager to Market
or

Supply Your Wood Products

Distributors
Sales Engineers

Furniture Dimension
Cores Cut-Stock Lumber

HOOSIER VENEER CO., INC.

BUYERS OF
DOMESTIC LOGS
FOR VENEER AND LUMBER

OFFICE:
3221 Mass. Ave.
Indianapolis, Ind. 46218
Phone: 546-1506

CONGRATULATIONS
to the CLASS OF 1969

HARTZELL INDUSTRIES, INC.

Piqua, Ohio

Manufacturers of -
Hardwood Lumber and Veneer
Aircraft propellers
Industrial fans
Automated Saw Mill Equipment

"PROFESSIONAL"

As a Professional Forester you'll find Ben Meadows service helpful always and in many cases virtually indispensable. My catalog lists literally thousands of things . . . equipment, supplies, gadgets—some you'll use almost constantly, others vitally necessary just once in a while.

I comb the markets of the world for new and improved forestry equipment. After passing rigid tests it is listed in my catalog at reasonable price and with my famous "Satisfaction or your money back" guarantee.

I am as near to you as your post office . . . normally your order is shipped the same day received. Write for new catalog . . . You'll be glad you did! It's free, of course!



THE
**BEN
MEADOWS
COMPANY**
533 AMSTERDAM AVE., N.E.
ATLANTA, GEORGIA 30306

BEST WISHES TO THE FORESTERS
OF THE CLASS OF 1969

Pierson-Hollowell Company, Inc.

630 N. COLLEGE AVE.
INDIANAPOLIS, INDIANA 46204
AC 317-632-5537

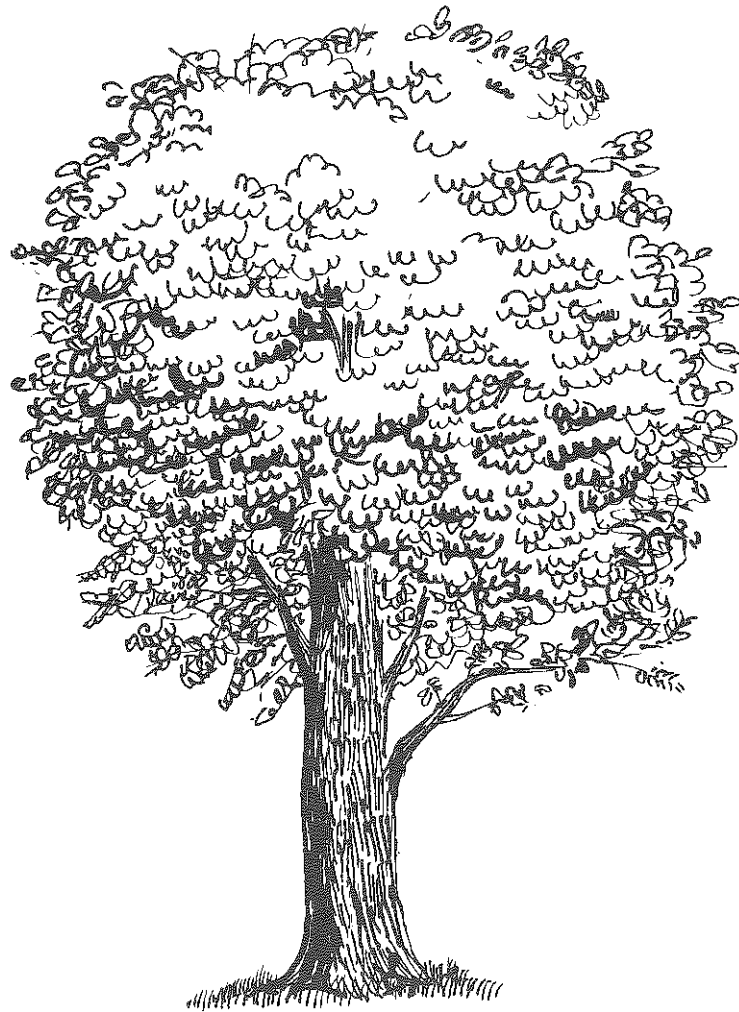
MANUFACTURERS OF

HARDWOOD VENEER AND LUMBER

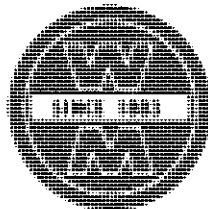
PLANTS AT LAWRENCEBURG, INDIANA

MANAGED TREE FARMS

FOR INDIANA'S HARDWOOD FUTURE.



Buyers of
Black Walnut Logs
and Timber



Wood-Mosaic Corporation

5000 CRITTENDEN DRIVE, LOUISVILLE, KY. 40221 PHONE 363-3531

ACROSS FROM STANDIFORD AIRPORT